

Fuse

Plan

- Find out what a "Bickford cord" is.
- Make a fire-conducting cord.
- Investigate the combustion properties.
- Conclude.

Fire-conducting cord (OSH) - a means for transmitting a fire pulse

Its Creator — William Bickford, it was invented in the 30s of the 19th c

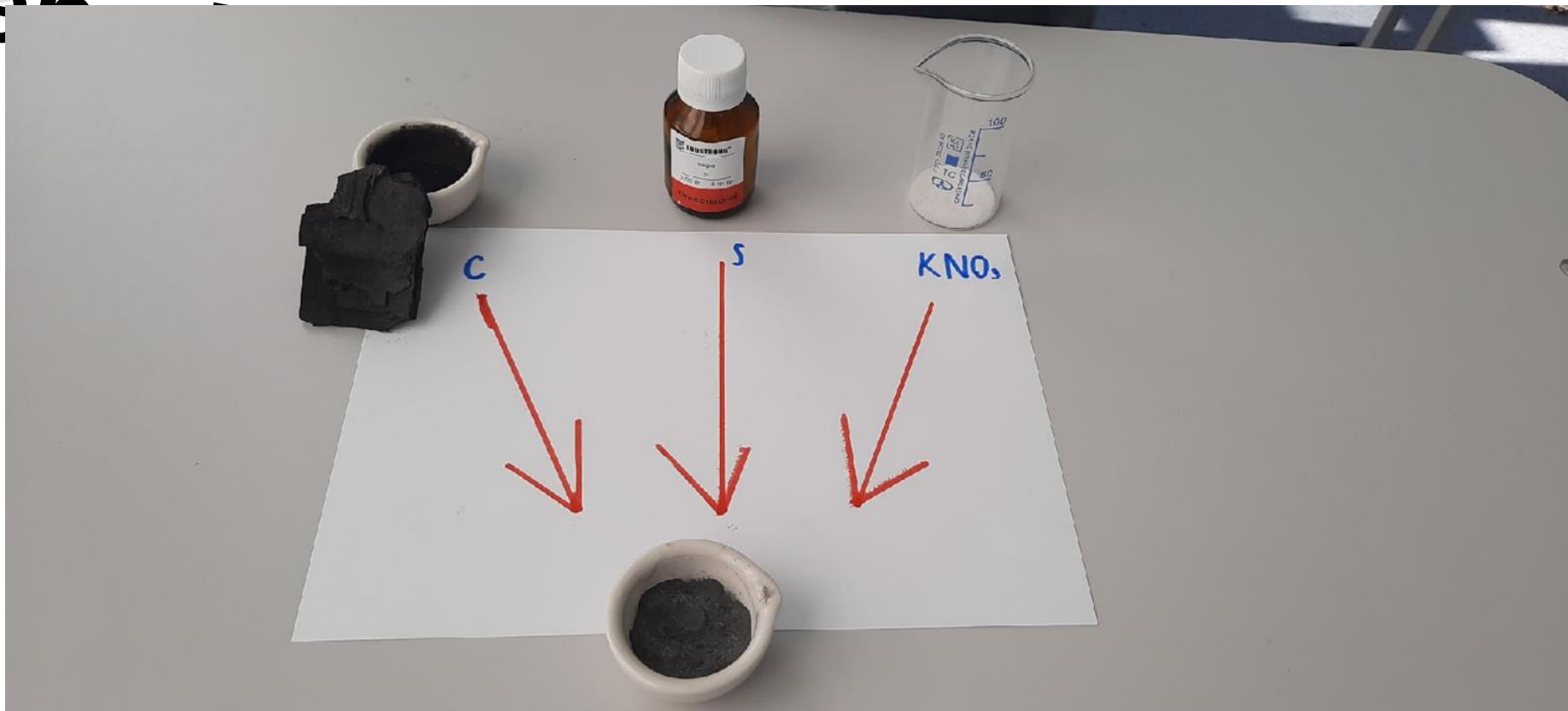
There are 3 types of cord:

OSH-with an asphalt braid

ASDA — paved with double braid

OSP-with plastic coating

Prep



The mixing ratio is 1:1: 2

1



2



4



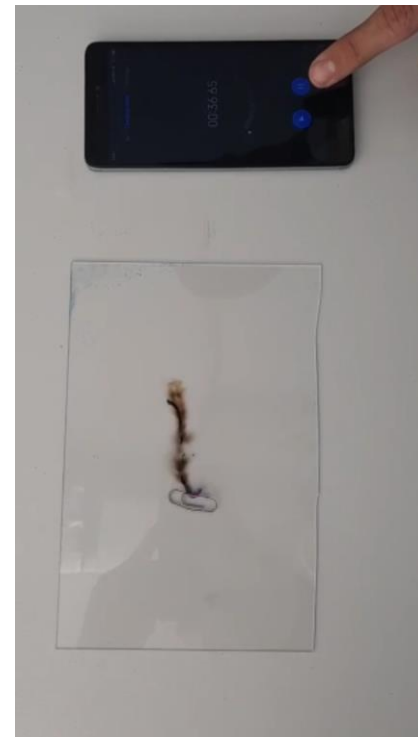
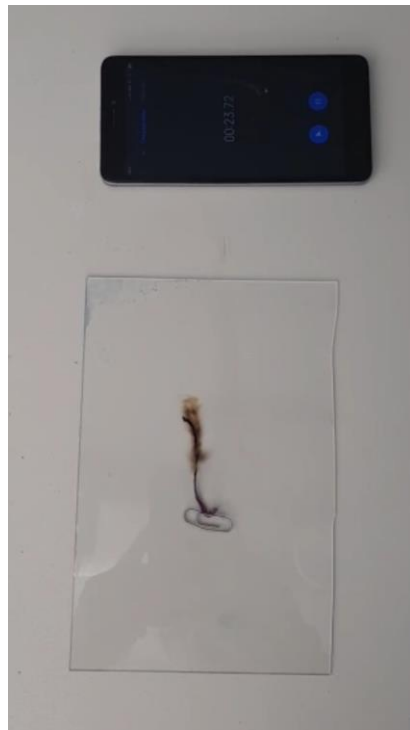
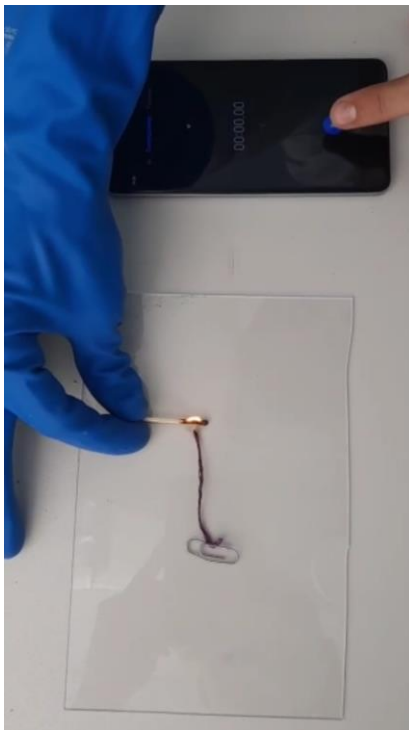
3



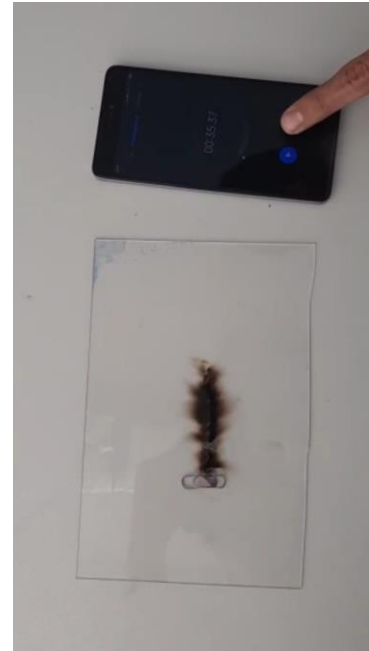
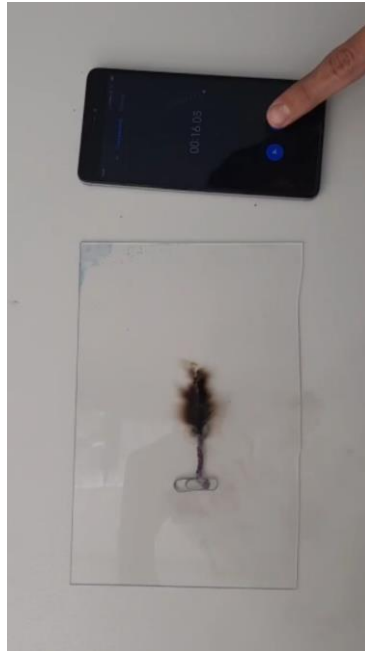
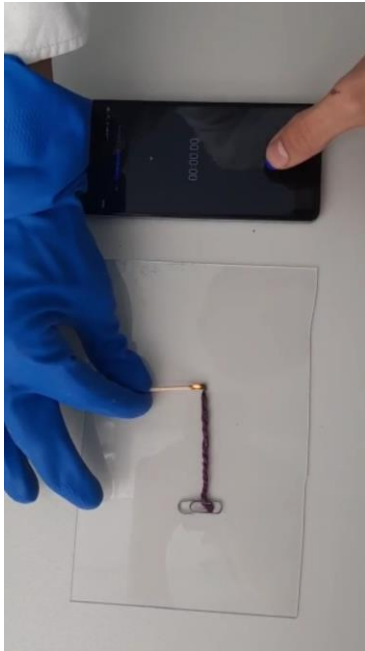
Experiment

Thin cord

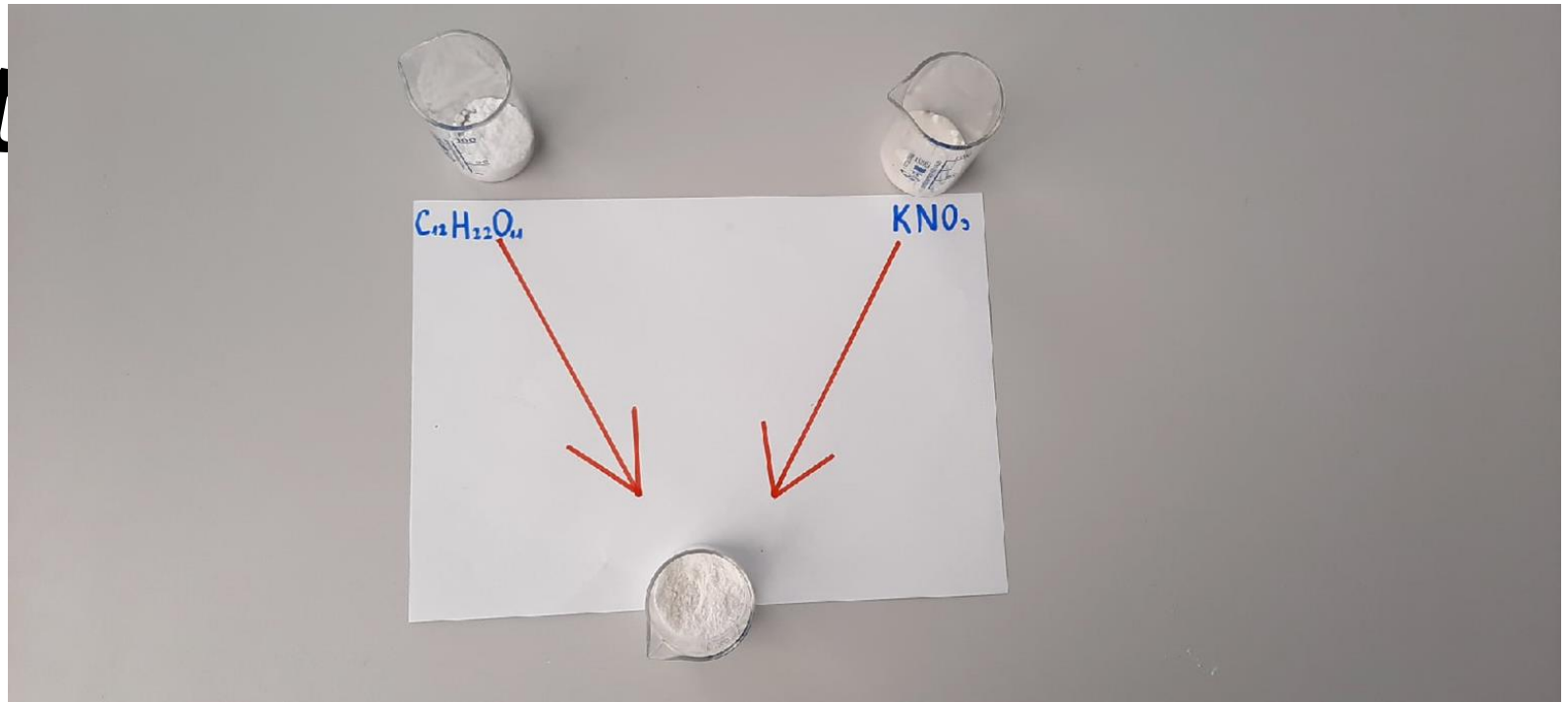
Combustion is about 35 seconds.



Thick cord
Combustion is about 35 seconds.



Preparat

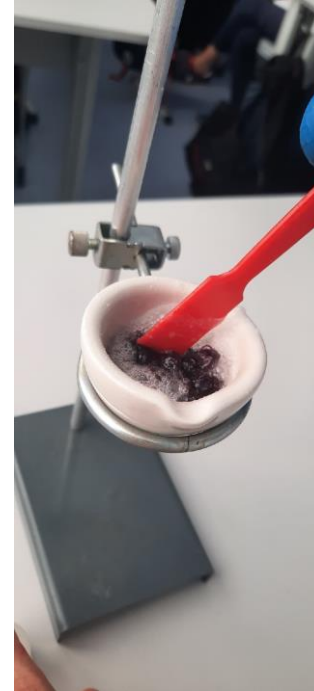


Mixing ratio - 1: 2

1



2

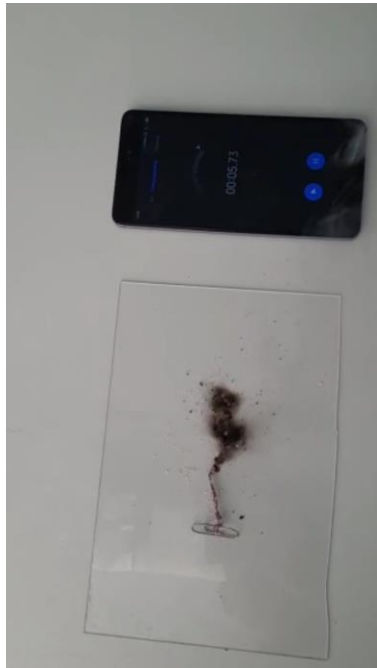
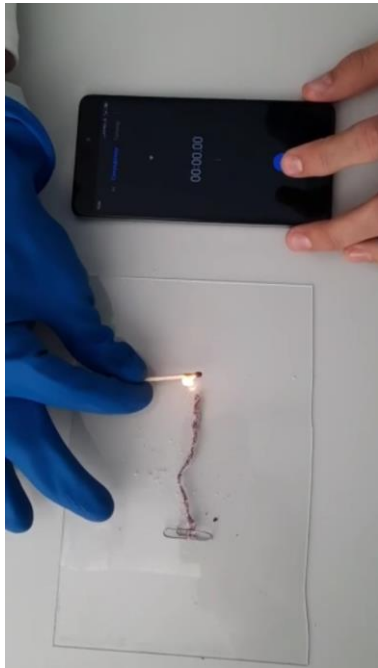


3



Experiment with the second cord.

Combustion for about 13 seconds.



Conclusion

1. We found that heat is distributed evenly.
2. We saw that the "Bickford cord" is not very reliable, because of
3. We found out that the cord can be made with a different comp